



# Model 14A00 Outdoor Temperature Sensor

## DESCRIPTION

The Model 14A00 is a temperature sensor that mounts in an outdoor location, usually under an overhang, and sends the outdoor temperature to an HAI system. It is coated with a sealant to withstand outdoor moisture. The outdoor temperature can be displayed on the console, spoken over the telephone, or displayed on an HAI communicating thermostat.

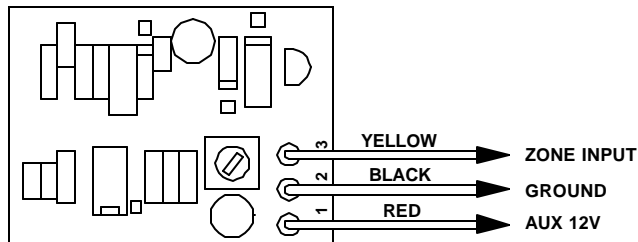
Automation programs, macros, and the control of indoor appliances can be controlled based on the outdoor temperature. The outdoor temperature can also be used to generate an alarm condition if the temperature goes above the high setpoint or drops below the low setpoint programmed in the system.

## INSTALLATION

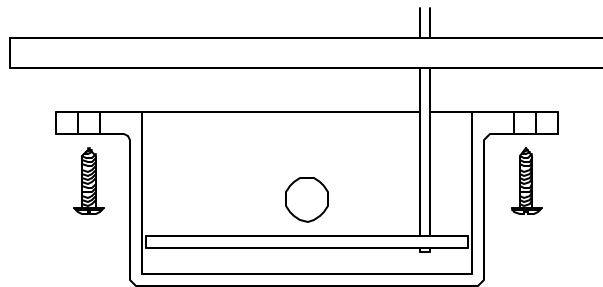
Each Model 14A00 Temperature Sensor requires one zone input. Program the zone type as an Outdoor Temperature (Type 81). It may also be programmed as a Temperature (Type 82) or Temperature Alarm (Type 83).

Plan to mount the Model 14A00 under an overhang or to the underside of an eave, otherwise known as the soffit, to protect it from direct sunlight and rain. Run a 4-conductor wire from the HAI controller to the selected location. Connect wires (Figure 1) using the 3 B-GEL water tight wire splices. The green conductor is not used.

Mount the 14A00 (Figure 2) using the 2 - #6 x 1/2" stainless steel self-tapping screws.



**FIGURE 1**



**FIGURE 2**

## SPECIFICATIONS

Dimensions: 2W x 1.5H x 1D

Temperature Range: 0° F - 120° F

Current Consumption: 10mA maximum